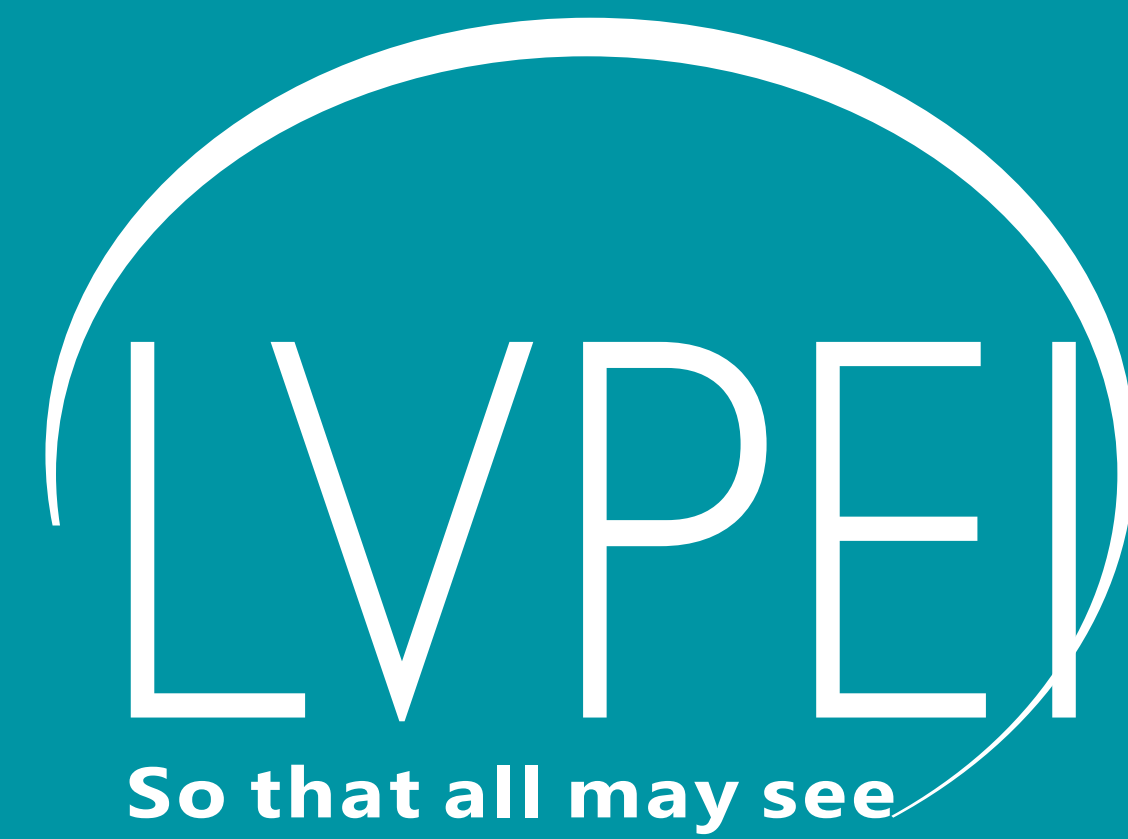




LV Prasad Eye Institute

Gullapalli Pratibha Rao International Centre
for Advancement of Rural Eye Care (GPR ICARE)



Village Vision Complex

Seshanna Chennawar Eye Centre
Mavala, Adilabad, Telangana; Estd: 09 June 2005



Nava Bharat Eye Centre
Poloncha, Khammam, Telangana; Estd: 14 March 2011



Godavathi Satyanarayana Murthy Eye Centre
Kapileswarapuram, East Godavari, Andhra Pradesh; Estd: 27 August 2016



Odisha Cement Limited Eye Centre
Rajgangpur, Odisha; Estd: 27 February 2015



Bhosle Gopal Rao Patil Eye Centre
Mudhole, Adilabad, Telangana; Estd: 20 December 1996



Arjun Waney Eye Centre
Berhampur, Odisha; Estd: 13 February 2015



Kuchakulla Ramachandra Reddy Eye Centre
Thoodukurthy, Mahbubnagar, Telangana; Estd: 24 October 1998



Y Mahabaleswarappa Memorial Eye Centre
Bellary, Karnataka; Estd: 13 February 2013



Madanapalle Eye Centre
Madanapalle, Chittoor, Andhra Pradesh; Estd: 11 March 2007



Swarna Bharat Eye Centre
Venkatchalam, Nellore, Andhra Pradesh; Estd: 01 July 2007



Sudhakar & Sreekanth Ravi Eye Centre
Kandukuru, Prakasam, Andhra Pradesh; Estd: 01 February 2009



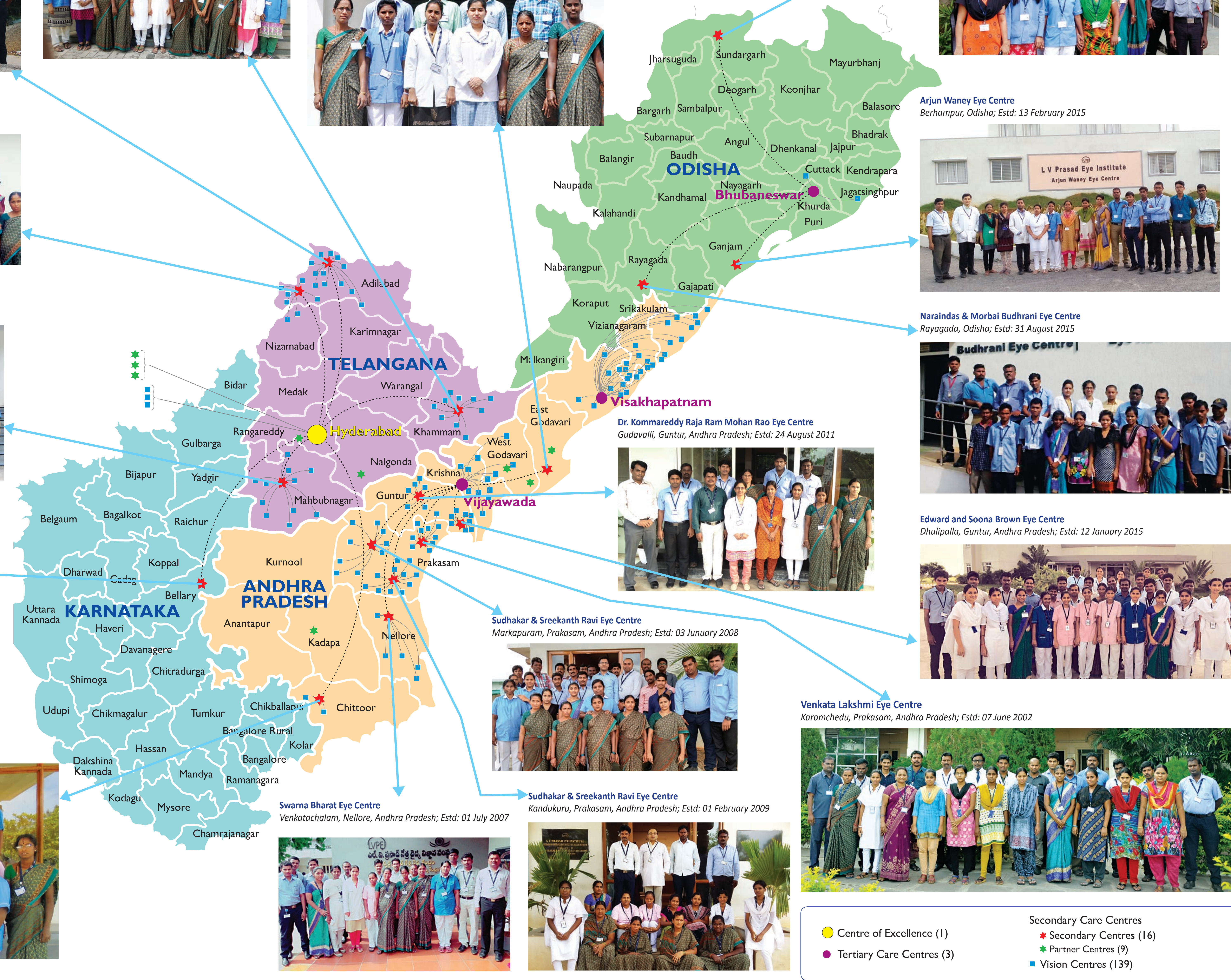
Venkata Lakshmi Eye Centre
Karamchedu, Prakasam, Andhra Pradesh; Estd: 07 June 2002



Edward and Soona Brown Eye Centre
Dhulipalla, Guntur, Andhra Pradesh; Estd: 12 January 2015



Naraindas & Morbai Budhrani Eye Centre
Rayagada, Odisha; Estd: 31 August 2015



No. of Secondary Centres : 16
No. of Vision Centres : 139
No. of Staff : 751

January 1996 – 31 March 2016

Secondary Centres

- Outpatient Services - 1.45 million (40% Non-Paying)
- Surgeries performed - 174 thousand (67% Non-Paying)

Vision Centres

- 1.25 million (100% Non-Paying)

Community Household Screening - 7.65 million

Community Based Rehabilitation - 12.8 thousand



Gullapalli Pratibha Rao International Centre
for Advancement of Rural Eye Care (GPR ICARE)

Kismatpur, Hyderabad, Telangana; Estd: 17 December 1998